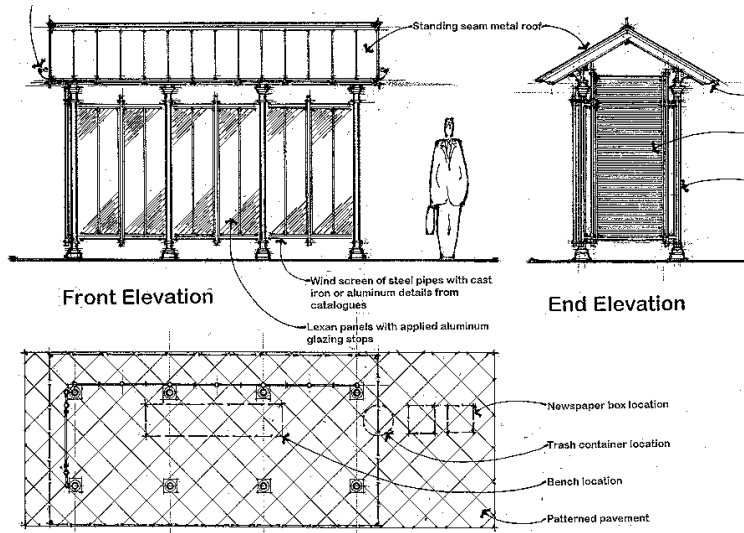


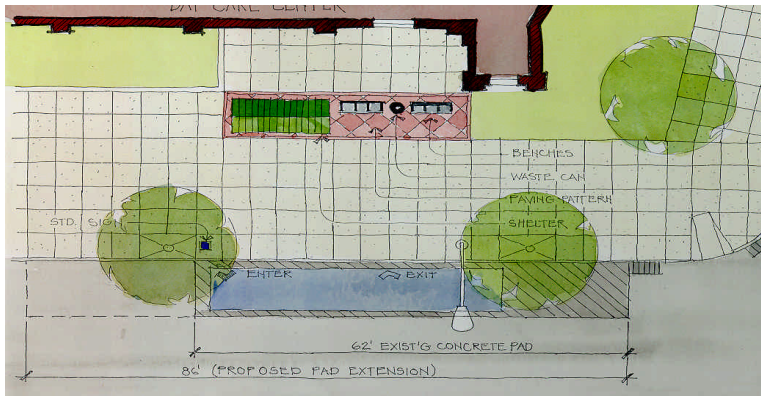
MTA Bus Design Baltimore, MD

Project:

The Housing Department of Baltimore City is in the midst of two large urban renewal programs in which two high rise developments were demolished and replaced with low rise townhouses. MTA was requested to install five custom bus stops along the public streets abutting the developments. ArchPlan - Gould Architects, a joint venture, designed traditional shelters for each of these locations along with signs, pavement, and amenities as part of their open -ended contract with MTA. As part of the assignment renderings were created for community presentations.



The modular shelter design includes seating, signboard, trash receptacle and special pavement.



Proposed custom shelter with traditional design as requested by tenant