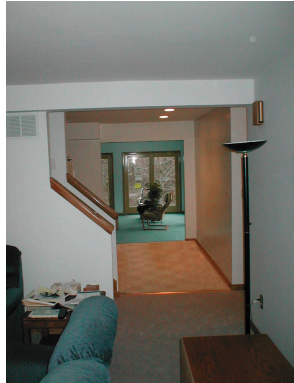




View from front entry,
before



View from front entry,
after

Costello Residence Catonsville, MD

Program: The program was to design an addition to a ranch-style building by adding a second floor above the existing kitchen and sun room, remodeling the existing basement by adding windows, and designing for a future office and rec. room. The addition was to contain a new master bedroom with a balcony, master bathroom, and a walk-in closet. Rooms and openings on the ground floor were reconfigured to create a formal dining room and new closet space.

Services: Design, construction documents, and construction administration.



Front façade, before



Front facade, after



Rear yard elevation, before



Rear yard elevation, after