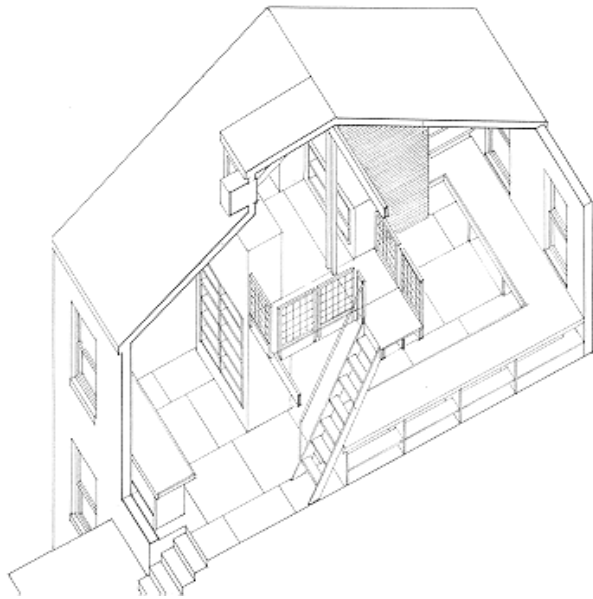


## Reuter Home Office Baltimore, MD

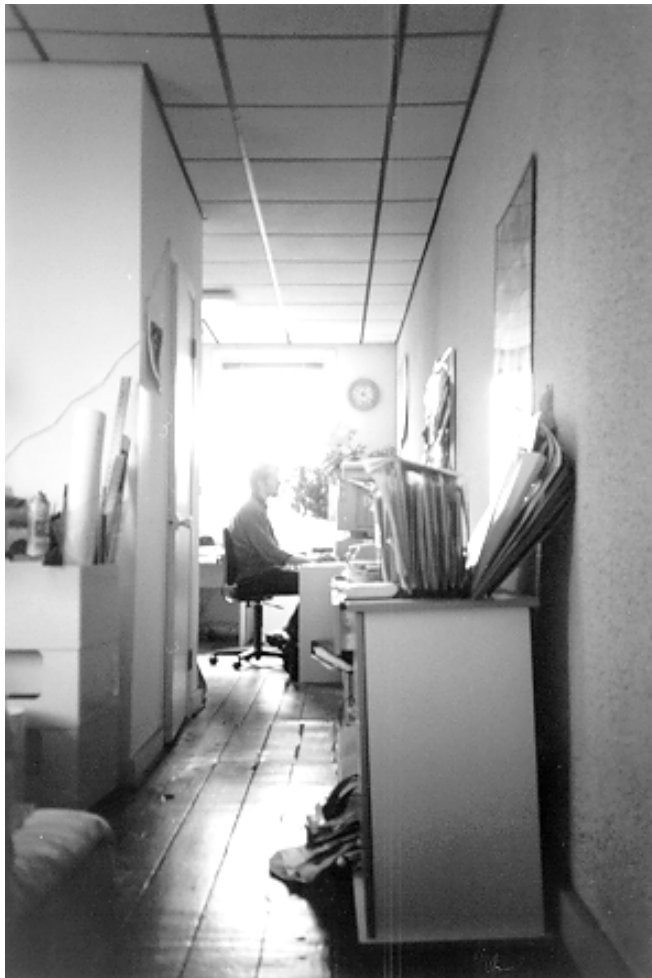
**Project:** Rehabilitation and renovation of a graphic design studio on the third floor of a rowhouse in historic Ridgely's Delight.

**Design:** ArchPlan developed a two-story studio scheme by opening the attic space to the third floor. A small mezzanine above the sanitary core provides extra storage space. Desks and shelves are simple built-in maple furnishings wrapping around all four walls of the studio, allowing maximum space for circulation and flexibility in placing the workspaces for three people.

**Services:** Design, construction documents and construction administration.



Isometric view of the studio and mezzanine



The office before the renovation



After the renovation